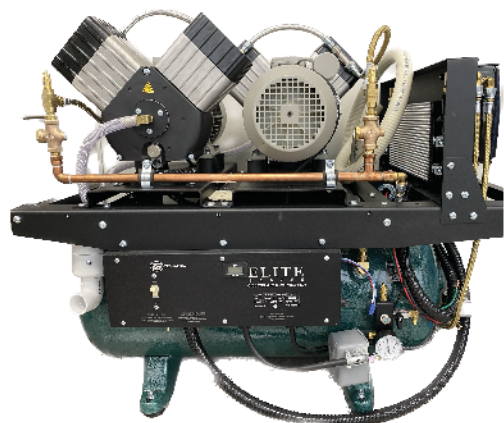




Q4-2023



Air Compressor - Oil less See Page 18

DRY VACCUM UNITS

Base
VAC



See Page 18



A12 PATIENT CHAIR PKG See Pages 2 & 3

Comfort-Sonic® P6 LED Piezo Scaler

- Built-in Water Regulation
- Includes: 6 tips



See Page 11

SLIMAX-C Plus® Beyes LED Curing Light System

- Instant output measurement
- Durable, Portable & Powerful
- Pink, Blue & Silver
- Built-in Radiometer



See Page 12

SABLE
INDUSTRIES INC.



See Page 6 & 7

I-max 3D **Owandy**
X-RAYS RADIOLOGY



See Page 15

Tuttnauer
Precision. Quality. Performance.

Biological Readers



MiniBio Auto reader with Printer
WTL198-0057 See Page 14

Bien Air
Dental

Built in Electric Motor



See Page 4

AUTOCLAVES



Tuttnauer
Precision. Quality. Performance.

See Page 13



ImageWorks
Generations of Imaging

Digital Sensor System



See Page 16

CHAIR PACKAGES



A12 OPERATING PACKAGE

A12HP-104

SPECIAL
\$ 18,382.00



Demo Pkg \$16,999 Showroom Model. Limited stock
Standard Package: A12 Chair, Swing Mount Delivery System, Cuspidor, LED Operating Light, Assistant Instrumentation

- Ergonomically engineered seat and cushion design
- Synchronized seat and backrest movement
- Ultrathin backrest and seat rest providing optimal access for the doctor
- Deluxe foot control with two programmable positions, return position and last position
- Easy release drop down arm rest
- Double articulating headrest provides unlimited positioning for patient comfort
- Adjustable for height
- All Metal Construction
- Cast-Iron backrest and baseplate
- Toe Guard protection
- 12 seamless or Plush upholstery selections
- Ultra leather™ Upgrade
- Input voltage 120V or 220V

CONTINENTAL DELIVERY UNIT **OPTION**



A6 RADIUS PACKAGE

SPECIAL
\$ 13,933.00



Demo Pkg \$13,299 Showroom Model. Limited stock
Standard Package: A6 Chair, OTP Delivery System, Cuspidor, LED Operating Light, Assistant Instrumentation

- Hybrid - Hydraulic base and electromechanical backrest
- Ergonomically engineered seat and cushion design
- Synchronized seat and backrest movement
- Ultrathin backrest and seat rest providing optimal access for the doctor
- Deluxe foot control with two programmable positions, return position and last position
- Easy release drop down arm rest
- Double articulating headrest provides unlimited positioning for patient comfort
- Adjustable for height
- All Metal Construction
- Cast-Iron backrest and baseplate
- Toe Guard protection
- 12 seamless or Plush upholstery selections
- Ultra leather™ Upgrade
- Input voltage 120V or 220V

MOBILE CART



MC-1302F
SPECIAL
\$ 2,923.00

PURCHASE A MOBILE CART AND RECEIVE A FREE BUILT IN CAVITRON STYLE OR PIEZO SCALER



SPECIAL
\$ 716

DOCTOR STOOL

- Available in 12 Upholstery colors or optional Ultra leather™
- Sturdy aluminum 5 leg base
- Reliable gas cylinder with height adjustment
- Five dual wheel casters
- Seat tilt adjustment
- Adjustable levers for seat height adjustment and back tilt



SPECIAL
\$ 893

ASSISTANT STOOL

- Available in 12 Upholstery colours or optional Ultra leather™
- Sturdy aluminum 5 leg base
- Reliable gas cylinder with height adjustment
- Five dual wheel casters
- Adjustable levers for seat height adjustment
- Adjustable anatomical body support
- Stool torso support with ratchet
- Adjustable full ring foot rest



SPECIAL
\$ 599

SADDLE SEAT STOOL

- Available in 8 colours
- Sturdy aluminum 5 leg base
- Reliable gas cylinder with height adjustment
- Five dual wheel casters
- Adjustable levers for seat height adjustment and seat tilt adjustment



SPECIAL
\$ 798

SPLIT SADDLE STOOL

- Available in black ONLY
- Sturdy aluminum 5 leg base
- Reliable gas cylinder with height adjustment
- Five dual wheel casters
- Adjustable levers for seat height adjustment and seat tilt adjustment

BUY ANY FLIGHT SADDLE STOOLS AND GET ONE FREE. Q4 SADDLE PROMO

NEW
PRODUCT LINE

CHAIR PACKAGES

HATCH COMFORT G7



- LED light
- Press type, articulating dual axis headrest
- Hydraulic motor system
- Dentist and assistant stools Included

- 60-degree seat rotation
- Chair safety system
- Adjustable armrest

- 3 programmable positions
- Fiber leather upholstery

SPECIAL PRICING
\$ 18,900.00

HATCH COMFORT C1



SPECIAL PRICING
\$ 17,900.00

- LED operating light
- Safety auto system

- Control switch panel
- Soft chair movement
- Twin-articulating headrest
- Removable spittoon bowl
- Rotating armrest
- Rotating cuspidor unit
- Hydraulic motor system

- Doctor and assistant Stools Included

CHAIR PACKAGES

COMFORT G7 Doctor Stool



\$950.00

- Seat Wide: 450mm
- Seat Height: 440mm-560mm
- Base Size: 580mm (5 casters)
- Seat Cover: Artificial Leather
- Backrest: Artificial Leather
- Base: Urethane Coating

AJAX AJ16 Doctor Stool



\$1,199.00

- Rounded stool pad
- 360° degree swivel
- Backrest tilt of 83°-110°
- Microfiber leather
- Caster frame, silent wheels
- Adjustable height & seat pad angle

AJAX AJ16 Assistant Stool



\$915.00

- Rounded seat
- Fiber leather upholstery
- Chrome plated pneumatic cylinder
- Adjustable chrome foot rin
- Cast aluminium star

ELECTRIC MOTORS

Built in Electric Motor

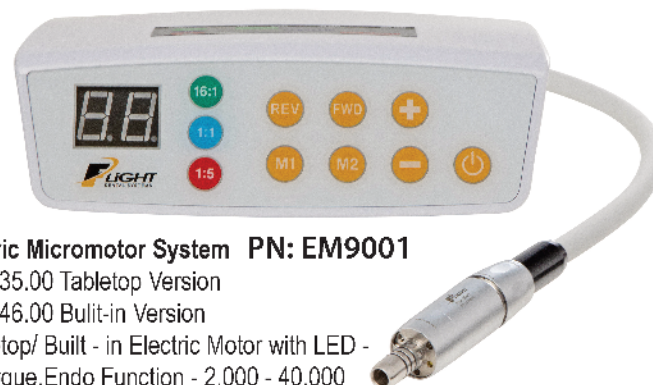
Bien Air⁺
Dental



CALL FOR OUR SPECIAL PRICE

FLIGHT
DENTAL SYSTEMS

PROMO PRICING \$1,889.00



New Electric Micromotor System PN: EM9001

Retail: \$2135.00 Tabletop Version

Retail: \$2246.00 Built-in Version

Flight Tabletop/ Built - in Electric Motor with LED -
3.4Ncm Torque, Endo Function - 2,000 - 40,000
RPM - 32VDC Power Supply

LE 15L

1:5 Attachment

- Anti-Heat System
- 4 Points Spray
- Ceramic Ball Bearing
- Fiber-optic
- 12 Months Warranty



MK Dent Contra Angle 1:5
Made in Germany HP's
ECO Line handpieces.

\$1,215.00/ each

LIGHTS

LED RETRO-FIT UPGRADE



TORCH LED

LIGHTS

SPECIAL \$1,198.00

***BUY 5 GET 1 FREE**

Specifications

Color Temperature:	5500k
Light Intensity:	30.000 - 8.000 Lux
LED:	4 Direct LED's

Before

After

- A-dec
- Pelton & Crane
- DCI
- Marus
- Midmark



CEILING MOUNTED LIGHT

MODEL:CL-306G-IRIS
MODEL:CL-305F-TORCH

SPECIAL

\$ 4,245.00
\$ 2,810.00



DUAL TRACK LIGHT

SPECIAL \$ 8,631
*** Incl. Free Monitor MD 24**



#L570-LED Lustrous LED Operatory Light

- Post mounted
- LED illumination
- LUX: 8,000 - 30,000
- 2 year warranty

SPECIAL: \$1,997

#L595-LED Lustrous LED Operatory Light

- Ceiling mounted
- LED illumination
- LUX: 8,000 - 30,000
- 2 year warranty

SPECIAL: \$2,998

CHAIR CLEANER

GENIE PLUS

Cleaning magic for chairs

Don't just sit there

Protect your investment.

Genie Plus chair cleaner contains a synergistic combination of surfactants and humectants specifically formulated to cut through grease and oils, while maintaining suppleness.

Alcohol
FREE



\$15.80

\$23.00



GENIE PLUS REMOVES
COMMON DENTAL CHAIR STAIN

- ☒ Eye Shadow & Mascara
- ☒ Oil and Grease
- ☒ Crayon
- ☒ Chocolate
- ☒ Suntan Lotion & Body Cream
- ☒ Red Lipstick
- ☒ Blood
- ☒ Urine

\$18.99

HANDPIECES

CELEBRATING
25
YEARS OF
EXCELLENCE

SABLE
INDUSTRIES INC.

SPECIALS **Q4**

45° HANDPIECES

20 Watts of Power • Ceramic German Bearings • Rear Venting Back Cap • Titanium Plated Finish • 1 Year Warranty



\$958.24

2000023
Rotamax PRO 45KL Fiber Optic
Kavo Type Connection
25,000 Lux Fused Optics



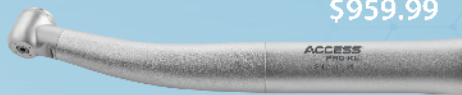
\$752.48

2000024
Rotamax PRO 45 Non-Optic
4-Hole Fixed Backend

**BUY 3
GET 1
FREE!****

FIBER OPTIC HIGH SPEED

Push Button • Quad Spray • Smooth and Quiet • Teardrop Head Design • New Turbine Design and Suspension • 2 Year Warranty



\$959.99

2000021
Access Pro KL Mini Head
Kavo Type Back End



\$959.99

2000022
Rotamax Pro KL Torque Head
Kavo Type Back End

**BUY 3
GET 1
FREE!****

NON-FIBER OPTIC HIGH SPEED

Push Button • Single Port Spray • Quick Connect • 360 Swivel • Slim Conical Head • Nickel Brass Casing • 1 Year Warranty



\$454.49

2000003
ACCESS II Non-Optic Mini Head



\$454.49

2000004
ROTAMAX II Non-Optic Torque Head

**BUY 3
GET 1
FREE!****

+ 2 FREE COUPLERS



2000101
SABLE 4 Hole 360°
Quick Connect Coupler

HIGH SPEED COUPLERS



\$191.30

2000107
NSK Type NL400
Fiber Optic
Halogen Coupler



\$289.68

2000108
NSK Type NL400
Fiber Optic
LED Coupler



\$332.02

2000105
5 Hole KAVO
Multiflex
Type Coupler



\$169.00

2000114
4 Hole KAVO
Multiflex
Type Coupler



\$235.00

2000116
6 Hole KAVO
Multiflex LUX
Halogen Type
Coupler



\$289.68

2000119
6 Hole KAVO
Multiflex LUX
LED Type Coupler

**BUY 4
GET 1
FREE!****

WWW.SABLEINDUSTRIESINC.COM | 1-800-368-8106



A Proud Canadian Company



The following are registered trademarks of the indicated companies: Kavo - Kaltenbach & Voigt GmbH & Co. NSK - NSK Nakanishi Inc., Sable Industries Inc. is in no way affiliated with the above companies. ** Free component must be of equal or lesser value than least expensive component purchased. All specials effective October 1st to December 31st, 2023

CELEBRATING
25
YEARS OF
EXCELLENCE

SABLE
INDUSTRIES INC. ♦

SPECIALS **Q4**

AIR MOTORS

NEW!!

\$437.69

1600111
20K Mini Air Motor



BUY 3
GET 1
FREE! **

ONE PIECE HANDPIECES

- Slim and Light Weight Design
- E-Type Contra Angle
- 1 Year Warranty

1600214 1:1 BB PB Latch
1600215 1:1 BB PB Friction Grip
1600216 4:1 Screw-In Prophy
1600217 4:1 Snap-On Prophy
1600218 4:1 BB PB Latch Prophy



\$289.21

BUY 3
GET 1
FREE! **

SLOW SPEED COMPONENTS

NSK* Compatible



Kavo* Compatible



1600005
ACCESS™ Prophy Clean
5K U-Type Hygienist Prophy Swivel Handpiece



BUY 4
GET 1
FREE! **

BIO-PURE



BUY 4
GET 2
FREE! **

25%
OFF

STERILIZER GASKETS



1700301 SciCan Statim 2000 Cassette Type
1700302 SciCan Statim 5000 Cassette Type
1700307 Midmark M11 Door Type with Dam

WWW.SABLEINDUSTRIESINC.COM | 1-800-368-8106



A Proud Canadian Company



The following are registered trademarks of the indicated companies: Kavo - Kaltenbach & Voigt GmbH & Co. NSK - NSK Nakanishi Inc., Sable Industries Inc. is in no way affiliated with the above companies. ** Free component must be of equal or lesser value than least expensive component purchased. All specials effective October 1st to December 31st, 2023

HANDPIECES

**BUY 4 OR MORE MK-DENT HIGH-SPEED HANDPIECES
(HE22KL OR HE21KL AND RECEIVE A FREE HANDPIECE MAINTENANCE SYSTEM)**



- Smooth Grip
- Available with or without light
- Chrome coating
- Ceramic bearings
- Push Button system
- Glass rod light conductor

ECO LINE

HIGH FLEXIBILITY, ECONOMIC PRICE!

HB23K **SPECIAL \$548.00**

High Speed Handpiece
without light

- 1-hole spray
- KaVo* Multiflex connection
- Mini head
- 15 W



HB23KL **SPECIAL \$669.00**

High Speed Handpiece
with light

- 1-hole spray
- KaVo* Multiflex connection
- Mini head
- 15 W



HE21KL **SPECIAL \$778.00**

High Speed Handpiece
with light Torque

- 4-hole spray
- KaVo* Multiflex connection
- Standard Head
- 24W

HE22KL **SPECIAL \$778.00**

High Speed Handpiece
with light

- 3-hole spray
- KaVo* Multiflex connection
- Small head
- 16 W

QUICK CONNECTORS



QC6016K **SPECIAL \$395.00**

6-hole Quick Connector with LED

MK-dent & KaVo Multiflex®
connection



QC4014K **SPECIAL \$194.00**

4-hole Quick Connector without light

MK-dent & KaVo Multiflex®
connection



**STORM
COUPLER**

SELF GENERATING
LED LIGHT
QC-165K

SPECIAL \$296.00

AIR MOTORS



AM0004 **SPECIAL \$345.00**

4-hole Air motor without water supply

Max. 20,000 rpm
Standard Intramatic® connection,
suitable for all common instruments

ECO LINE LOW SPEED

PRICE STARTING \$778

LE11L | LE11

Contra Angle Handpiece
with light | without light



1:1, blue
With internal water
Max. 40,000 rpm
For CA burs (Ø 2.35 mm)

- Smooth Grip
- Available with or without light
- Chrome coating
- Intramatic® connection

LCH11 **SPECIAL \$446.00**

Contra Angle Head

1:1, blue
Max. 40,000 rpm
For CA burs (Ø 2.35 mm)



- KaVo® compatible
- Chrome coating
- Push button system

HANDPIECES

Beyes® Maxso® Contra-Angle



Screw-on
CS1-CH09
Reg: \$156/ea

3+1FREE = \$117/ea



Latch Type, CA Burs
CS1-CH04
Reg: \$172/ea

3+1FREE = \$129/ea



Snap-on
CS1-CH08
Reg: \$156/ea

3+1FREE = \$117/ea



Push Button, CA Burs
CS1-CH02
Reg: \$218/ea

3+1FREE = \$163/ea

Beyes® Heads



CH09
Screw-on
Reg: \$68/ea

3+1FREE = \$51/ea



CH04
For Latch Type, For CA Burs
Reg: \$78/ea

3+1FREE = \$58.50/ea



CH08
For Snap-on
Reg: \$68/ea

3+1FREE = \$51/ea



CH02
For Push Button, For CA Burs
Reg: \$135/ea

3+1FREE = \$101.25/ea

Beyes® Sheaths



CS1
1:1
Reg: \$86/ea

3+1FREE = \$64.50/ea



CS4
4:1
Reg: \$361/ea

3+2FREE = \$216.60/ea

Straight Nosecone



S20A-NS
For HP burs
Reg: \$140/ea

3+1FREE = \$105/ea

Motors



M20A
Without water spray
Reg: \$369/ea

3+1FREE = \$276.75/ea

EZ-Swivel® Couplers

Beyes PD connection, 4 Holes HP 6008
Beyes QD connection, 4 Holes HP 3018

Reg: \$170/ea **Sale: \$149/ea**



Kavo® connection, 4 Holes, Non-Optic HP 2063

Reg: \$312/ea **Sale: \$179/ea**



Kavo® connection, 6 Holes Fiber-Optic HP 2064

Reg: \$312/ea **Sale: \$199/ea**

NSK® connection, 4 Holes, Non-Optic

Reg: \$178/ea **Sale: \$149/ea**

NSK® connection, 6 Holes Fiber-Optic

Reg: \$203/ea **Sale: \$169/ea**



Beyes® Surgical 45 Handpieces

- 45° Head Design
- Rear Air Exhaust
- Steam Water
- Swivel and Quick Disconnect
- 1 Year Warranty

Non-Optic
Reg: \$558/ea **Sale: \$449/ea**

- 4 Hole Backend
- QD Backend



LED
Reg: \$758/ea **Sale: \$639/ea**

- 4 Hole Backend
- NSK® Backend
- Beyes® PD Backend
- Star® Backend
- Kavo® Backend



Beyes®

BUY 3, GET 1 FREE!

AirLight® M800 Smart
LED High Speed Handpiece

- 23W of Torque
- 410,000 RPM
- Ceramic Ball Bearings
- Handles up to 60 PSI of air pressure
- Titanium Body
- 1 Year Warranty

**Direct LED Without Fiber Optics!
Just Brilliantly Bright Illumination!**

Triple Spray

Direct-LED

Built-in
Generator

Backend	Code
4 Hole	HP3008P
Beyes®	HP5018P
W&H®	HP3022P
Star®	HP3054P
NSK®	HP3043P
KAVO®	HP3036P

Reg. \$679ea
Net: \$509.25/ea



PIEZO TIPS

EMS* & Beyes* Compatible

Satelec* & NSK* Compatible

4+1FREE

Scaling

Popular used to remove calculus and plaque on supragingival, neck of teeth and hard calculus on the teeth point

Equivalent to EMS* Type B used to remove supragingival heavy calculus

Equivalent to EMS* Type P used to remove the calculus of supragingival, subgingival interdental calculus and plaque

Popular Equivalent to EMS* Type A used to remove all supragingival calculus and plaque

Equivalent to NSK* G1 SATELEC* #1 used to remove supragingival and neck calculus and plaque

Equivalent to EMS* Type C NSK* G2 SATELEC* #2 used to remove supragingival heavy calculus

used to remove dental crown and mend material

Reg: \$29.95
Net: **\$23.95/ea**

E-G1 S-G1 E-G2 S-G2 E-G3 S-G3 E-G4 S-G4 E-G5 S-G5 E-G6 S-G6 E-G7 S-G7

Perio

Popular used to remove subgingival calculus.

Popular Equivalent to EMS* Type PS used to remove subgingival and deep perio calculus.

Equivalent to EMS* Type PDL3 used to level on the surface of endo during the periodontal flap surgery.

Equivalent to NSK* G4 SATELEC* #10P used to remove subgingival calculus and interdental calculus.

can replace the traditional Greiner, used for preparing good endo jaws.

Reg: \$32.95
Net: **\$26.95/ea**

E-P1 S-P1 E-P3 S-P3 E-P3D S-P3D E-P4 S-P4 E-P4D S-P4D

Left angled, to remove calculus from very narrow inter-root spaces and furcation.

Left angled, diamond-coated, to remove calculus from very narrow inter-root spaces and furcation.

Right angled, to remove calculus from very narrow inter-root spaces and furcation.

Right angled, diamond coated, to remove calculus from very narrow inter-root spaces and furcation.

Reg: \$45.95
Net: **\$36.76/ea**

E-P2L S-P2L E-P2LD S-P2LD E-P2R S-P2R E-P2RD S-P2RD

LED Scaler Handpiece (Fiber Optic)

UHP-EF, Compatible with Beyes and EMS

Reg: \$255.52/ea **2+@: \$179/ea**



Scaler Handpiece (Non Optic)

UHP-E, Compatible with Beyes and EMS
UHP-S, Compatible with Satelec

Reg: \$255.52/ea **2+@: \$169⁹⁵/ea**



Tip holder #1

Reg: \$39.90 **Sale: \$19⁹⁹**



Tip holder #2

Reg: \$49.90 **Sale: \$29⁹⁹**



Tip Wrench

WST (14649) WEF
Reg: \$25.95/ea **Sale: \$19.99/ea 5+@: \$16⁹⁹/ea**



Beyes*

EasyProphy®

Air Polishing & Cleaning System

- Ergonomic Design
- Flexible in 360 degrees
- Swivel and Quick Release
- Cleaning with taste
- 1 Year Warranty

Quick Disconnect, Swivel

easyProphy 200/QD

Reg: \$798/ea

1+1FREE = \$399/ea
+ Get 1 FREE QD Coupler

H1, Handpiece with Nozzle
N1, easyProphy Nozzle
O-ring Set, 5Pcs/Pack

Bosworth Propy Powder

Mint, 284g/btl
orange, 284g/btl

*Powder sold separately



Reg. **1+1FREE**
\$399 **\$199.50**
\$250 **\$125.00**
\$17 **\$8.50**

Reg.
\$45.95
\$45.95

HANDPIECE MAINTENANCE

Beyes

Comfort-Sonic® P6 Plus LED Piezo Scaler

Sale: \$569.00

- Detachable Handpiece
- Autoclavable Up to 135°C
- Powerful with easy adjustable design
- Built-in Water Regulation

Includes: 6 tips



Beyes

Comfort-Sonic® P9 LED Piezo Scaler

Sale: \$969.00

- 3 Modes: Scaling, Perio, endo
- Optic LED handpiece
- Exceptionally low noise level
- Convenient portable design

Includes: 8 tips, 1 tip holder
& 2 water bottles



SABLE
INDUSTRIES INC.

**SPECIAL
PRICE OFFER
\$2,048.25**

THE AUTOSCALER

Cavitron® Compatible Ultrasonic Scaler

Why Autoscaler?

- Over 40 Years Experience
- Accepts Cavitron tips
- Provides & Stands behind 6 Year Warranty on Circuit Board and 2 years for other components - excludes the handpiece assembly.
- Compare our price to other brands, why pay more!

The Autoscaler 30K p/n 1900001



ULTRASONIC SCALING TIPS

30,000 Hz Hu Friedy Ultrasonic Insert #10 - Universal
1900603 **\$239.99**



25,000 Hz Hu Friedy Ultrasonic Insert #10 - Universal
1900604 **\$239.99**



CURING LIGHTS

ART

ART P311 Piezo Scaler

SPECIAL \$1,095.00

- LCD Screen for Easy Power and Mode Readout
- Ergonomic, Removable Piezo Hand Piece
- One-Step Footswitch Activation
- Includes 4 Piezo Tips and 1 Torque Wrench*



ART

ART M311 BONART

SPECIAL \$1,195.00

- LCD Screen for easy Power and Mode Readout
- One-Step Foot switch Activation
- Three Selectable Modes: Scaling, Perio and Endo
- Available in 25k or 30k
- Includes 2 Magnetostrictive Inserts*



Magnetostrictive Scaler Tabletop Ultrasonic Scaler

FLIGHT
DENTAL SYSTEMS

SPECIAL \$948.00



25 KHZ and
30 KHZ

This portable unit only requires a water source and power source to operate. It is easy to use and small in design to fit in the smallest spaces.

Cavitron® Compatible Ultrasonic Scaler. Built In Ultrasonic Scaler

SPECIAL PRICE \$948.00

FLIGHT
DENTAL SYSTEMS



25 KHZ and
30 KHZ

The unit can be built into and integrated into any delivery system on the market.

HANDPIECE MAINTENANCE

Beyes

CareMaster® Automatic Handpiece Maintenance System

- Maximize the life span of handpieces
- Economical, efficient and time-saving
- Filtered air used to rotate the handpieces for safety
- Care for all handpiece brands
- Disposable mist filtration system
- Detachable door for easy cleaning
- Easy replenishment of solution tank
- 1 year warranty

Sale: \$1,499.00
+1 Free Maintenance Oil (1L)



FLIGHT
DENTAL SYSTEMS

Automatic Handpiece Maintenance System

- Ergonomical, efficient and time-saving
- Care for most handpieces of all brands
- Disposable mist filtration system
- Easy fill oil reservoir
- Three programmed individual cycles:
 - Short for high Speed Handpiece
 - Long for Low Speed Handpiece
 - X-long for speed Reduction Handpieces

Handpieces adapters sold separately

FLT-HPL-3001	2x High Speed and 1x Slow Speed
FLT-HPL-3002	1x High Speed and 2x Low Speed
FLT-O-3205	Premium Maintenance Oil (1000 ml)
FLT-HM_7007	Absorbent Sponge (1/pk)



SPECIAL \$1,199.00

MK-dent

Lubrication



LU1011

\$49.00/ea
BUY 5 + 1 FREE

- For maintenance & cleaning of High- & Low Speed Handpieces.
- Content 500ml



LU1022

\$49.00/ea
BUY 5 + 1 FREE

- For maintenance & cleaning of High- & Low Speed Handpieces.
- Content 500ml • Suitable for Kavo® QUATRO care

Beyes



Maintenance Oil (1L)
\$78.00/ea

- For use in all automatic dental handpiece lubrication and cleaning stations including CareMaster (Beyes), and Care 3 (NSK). BayesLube® Content 1000ml



NEW!
SABLE **5+1**

5+1

2200103 SPRAY 500ml **net 5 + 1 \$35.00**
2200104 REFILL 500ml **net 5 + 1 \$46.18**
2200105 DROPPER 60ml **net 10 + 2 \$19.88**

CURING LIGHTS

Beyes

SLIMAX-C Plus® LED Curing Light System

- **Durable:** Solid aluminium body sets it apart from all its plastic competitors
- **Portable:** Cordless design with a long lasting battery
- **Powerful:** Generates incredible output of 2000mW/cm² (±10%)
- **Beautiful:** 3 colours give you a decor choice with a personal touch

- Built-In Radiometer
- Instant output measurement

REG: \$798.00/ea
1+1 FREE \$399.00/ ea



FLIGHT
DENTAL SYSTEMS

XLITE 2

SPECIAL \$338.00/ea

- Light Source: 5w LED Module
- Wavelength Range: 400-500nm
- Light Performance: 1,700 mW/cm ±20%
- Power voltage: 3.7Vdc
- Battery Charger: Input 110-240Vac, 50-60Hz
Output 5Vdc, 1A
- Battery: Lithium-ion battery 3.7Vdc, 1800,Ah
- Charging Time: Approximately 180 min
- Dimensions: Handpiece: maxø25.5 x 218 mm
Weight: Handpiece:93g Base 190g



Spray mist is absorbed within the disposable filter sponges that are easily exchanged
No Mess

- HPLP011 Sponges, 12pc/pack **\$58.00/ea**
- HPLP015 Oil absorbent sheet, 20pc/pack **\$48.00/ea**

Handpieces Spray Adapters

\$14.00/ea



AUTOCLAVES

Tuttnauer
Innovation · Legacy · Partnership

T-Edge 10S
T-Edge 11S

NEW!

**CALL FOR OUR
SPECIAL PRICE**

+ Receive \$500 US Manufacturer's REBATE



AUTOCLAVE T-Edge11S (27liter/ 7 Gallons) chamber Capacity

- Optimal chamber capacity (23 Liter/6 Gallons)
- Convenient and easy loading with door opening to 110°
- Assorted water filling and drainage methods(top, front or automatic)
- Range of automatic one-button programs
- User - friendly touchpad and control panel
- Advanced documentation and traceability options and barcode
- Remote Wi-Fi monitoring via smartphone or tablet
- 2 Years Parts and Labour Warranty

Valid Oct.1-Nov.15.2023

FLIGHT
DENTAL SYSTEMS

Clave B

- Fully automatic B Class Pre/Post Vacuum autoclave with 23L. chamber, LCD display, built-in printer, USB port, independent steam generator, independent temperature and pressure monitoring, high precision control system, automatic alarm for water level, door locking and error code indication.
- 2 Year Parts Warranty



SPECIAL PRICE

\$ 8,780.00

**INTERNAL PRINTER
INCLUDED**

Tuttnauer
Innovation · Legacy · Partnership

EZ 9 P

CALL FOR OUR SPECIAL PRICE

- EZ are fully automatic large capacity sterilizers with closed door drying, innovative display.
- 2 Year Parts and Labor Warranty

Chamber Brite Powder
Autoclave Cleaner

CLEAN & SHINE Your Autoclave Chamber



\$ 88.95 Special Price



FLIGHT
DENTAL SYSTEMS

Clave 16+

SPECIAL PRICE

\$ 5,681.00

- Unique Pressure-Pulsing steam injection
- Intuitive and easy to use Touch Pad
- Fast and Efficient Steam Sterilization
- Includes USB Port for Data Management
- 5 Programmed cycles
- 3 Tray Capacity (16L Chamber)
- High quality 304 Stainless steel
- Optional External Printer Available
- 2 Year Parts Warranty



Tuttnauer
Innovation · Legacy · Partnership

CALL FOR OUR SPECIAL PRICE

EZ 10 P

**Autoclave with
printer**



- Chamber door remains closed during entire cycle
- Hepa filtered air is circulated in chamber during drying
- All program parameters can be customized and stored
- New brighter and easier to read panel
- Two year parts and labor warranty

FLIGHT
DENTAL SYSTEMS

Clave 23+

SPECIAL PRICE

\$ 6,581.00

- Unique Pressure-Pulsing steam injection
- Low Maintenance Chamber Type Autoclave
- Large Chamber Capacity 23L
- Can fit 4 Trays or 25 Instruments per Slot with Cassettes
- Includes USB Port for Data Management
- 5 Programmed cycles
- High quality 304 Stainless steel
- 2 Year Parts Warranty



INTERNAL PRINTER INCLUDED

Thermal High Disinfectors Washers & T-Clean Detergent Line

TIVA2 TD Washers

Dental and medical practices need strict cleaning, disinfection and sterilization of instruments before they can be used on patients. Thermal High Disinfection employs moist heat above 194° for a minimum of 5 minutes to kill bacteria and viruses in the washing phase. The TIVA line products:

- Thermal High Disinfection to achieve a complete decontamination cycle
- Minimizes consumption and operation costs while maximizing sustainability
- Improves user experience with an advanced control system and an easy to use interface

TIVA2H-D Under Counter Washer

112002041

\$ 10,956.00



TIVA2-D Counter Top Washer

112002042

\$ 9,792.00



BUY TIVA 8 WASHER AND RECEIVE \$500 MANUFACTURE RABATE



Special Infection Control Promotion

Buy a T-Edge Autoclave or a TIVA2 Washer
Receive \$500 US Manufacturer's Rebate

For TIVA2H-D
Under Counter Washer
For TIVA2-D
Counter Top Washer



TIVA2H-D
Under Counter Washer



T-Edge
Autoclave

*This offer is limited to the purchase of one (1) TIVA2H-D or TIVA2-D Washer.

For TIVA2H-D Under Counter Washer
For TIVA2-D Counter Top Washer

For T-Edge Autoclave
For T-Edge Autoclave



PROMO OFFER

Biological Indicators and Readers to ensure Patient Safety

Biological Readers with Printers

Q1 PROMO Incl. 50 B.I.'S 20 Minutes

Automatic reading and traceability system for sterilization

- 20 min or 1 hour process times
- Multiple process times can be used simultaneously
- One BI & reader can be used in both gravity and pre/post vacuum sterilizers



Thermometer

WTL198-0147 \$ 65.00



MiniBio Auto reader with Printer

WTL198-0057 \$799.00



BioNova Incubator with Printer

WTL198-0079 \$1,950.00

Chemical Indicators and Tape

WTL198-0081

Multi-Variable Indicator/ Type 4



\$ 18.60 Bag/500



WTL198-0082

Integrators Type 5

\$ 98.00 Bag/250

50m x 18mm

\$ 629.95 Box/100 Rolls



WTL198-0053

Self-Adhesive Tape/Type 1

Biological Indicators



20 MIN

WTL198-0072
Steam, Ultra Rapid
20 minute

Biological indicator
can be used in gravity
or pre/post vacuum
autoclave

\$ 249.95 Box/50



1 HOUR

WTL198-0058
Steam, Rapid
1 hour

Biological indicator
can be used in
gravity or pre/post
vacuum autoclave

\$ 224.95 Box/50

20 MIN

WTL198-0077
Process Challenge Device
(PCD) 20 minute

\$ 442.95 Box/25

1 HOUR

WTL198-0075
Process Challenge Device
(PCD) - 1 hour

\$ 408.95 Box/25

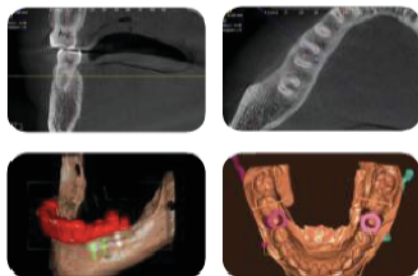


WE ARE NOW A "ONE STOP SHOP"
FOR ALL YOUR INFECTION CONTROL NEEDS

I-MAX^{3D}

MINI PANORAMIC MACHINE

- Futuristic design and ergonomics
- Exceptional image quality
- Easy to install and operate
- Cost - effective performance
- 24 Programs
- 5 Years Warranty



Owandy Imax Mini 2D

SPECIAL PRICE \$26,000



* Installation is not included

Owandy Imax Mini 3D

SPECIAL PRICE \$55,986

I-MAX^{3D}

PANORAMIC IMAGING

- HD images & Complete programs
- Ethernet or stand - alone
- A mobile sensor.
- Flexible and affordable cephalometry
- 5 Years Warranty



2D

SPECIAL PRICE

I-Max Pan / Ceph

\$39,300

3D

SPECIAL PRICE

I-Max Pan / Ceph

\$68,460

Owandy-RX Pro

PRECISION AND SIMPLICITY

Intraoral X-ray system

SALE \$4,499.00



Equipped with High Frequency technology and a 0.4mm focal spot, the Owandy-RX Pro ensures consistent exposure parameters and high quality X-ray emissions.

Equipped with a LCD screen, the Owandy-RX Pro has a simple and intuitive user interface.

On response to energy saving concerns, the generator has an integrated Sleep mode function in case of prolonged inactivity.

X-Ray emissions are controlled safely and remotely.

5 Years Warranty

HATCH XRAY

HIGH FREQUENCY INTRAORAL X-RAY SYSTEM

SALE \$4,499.00



Ease of use

- The sleek design of the X-Ray tube-head coupled with an in-built short cone, enable to be positioned at any angle and direction with ease to get good images.

Smooth and Stable

- The smooth, drift-free positioner allows you to trigger the exposure from a distance without the concern of shift in image position during exposure.

SKANSAFE™

- This precise digital control for X-ray generation eliminates soft radiation. Hatch X-Ray is designed and built to comply with global safety and protection standards ensuring safety of the user and equipment in the entire operating range.

SKANSHIELD™

- The unique shielding technology results in virtually negligible leakage radiation. This ensures that both patient and clinicians are safely protected from unwanted radiation



Remote Console Door Bell switch

SENSORS



Size 1
Special:
\$ 6,599.00

Size 2
Special:
\$ 6,999.00



- Market-leading resolution (20+ line pairs per mm)
- Rounded corners for patient comfort
- Razor thin: 5.4 mm thickness
- Integrates with major software platforms
- USB interface works with your existing system

USB Direct Intra-oral Sensor



- Atraumatic & ergonomic
- Simple & automatic
- High-definition & precision
- Fully adapted to all your clinical practices
- Reliable & robust
- 5 Years Warranty

Opteo Digital Sensor Package

Includes:
Size 1 Sensor x 1
Size 2 Sensor x 1
Size 2 Positioning kit x 1
Imaging software Single x 1



Special: \$ 8,999.00

INCLUDES SIZE 1 AND SIZE 2 SENSORS

INTRAORAL CAMERA

CANAVIEW®
Intraoral Camera
SALE: \$999.00



An excellent communication tool that improves understanding and interaction with patients. The Canaview intraoral camera provides visual evidence that you need to educate patients and make more accurate diagnoses. Boasting a true auto-focus and intuitive camera lighting system, this dental digital photography camera requires no manual adjustments and is easily shared between different examination rooms and chairs.



Features:

- 1 Year Warranty
- Direct USB connection to computer
- Ultra-wide and non-spherical lens
- Innovative Anti-fog design
- Lightweight and simple to use
- Complimentary Image management software included
- Ability to integrate into every leading software such as:



OWANDY - CAM HD



Special: \$ 1,249.00

Kit content:

- Camera + dock
- 2.5m cable
- USB cable extension
- Wall support
- Cleaning wipes
- Single-use hygienic covers for camera
- Installation USB key (drivers, diagnostic tools, QuickVision)
- Owandy-Cam HD Quick Start
- 5 Years Warranty



OWANDY-CAM HD

TECHNICALS SPECIFICATIONS

Owandy Cam HD	
Handpiece dimensions	205 x 28 x 24 mm
Intraoral part thickness	11 mm
Weight of handpiece alone	55 gr
Sensor	CCD 1/4" Sony high sensitivity
Resolution	752 x 582 pixels at 50 image/sec
Lighting	8 LEDs
Focus	Fixed focus large depth of field
Angle	105°
Freeze frame	Touch button
Connection	USB 2.0 High-Speed (480 Mbit/s)
USB cable length	2,5 m



Velopex Extra-X Automatic Dental X-Ray Film Processor

High Quality Dental X-Ray Imaging For Diagnosis And Archiving

The Velopex Extra-X processes high quality images of all dental x-ray film: Size 0-4, panoramic and cephalometric film. The Extra-X is fully automatic, requiring no personal supervision during processing and delivers dry, developed x-ray images in 4 minutes.

Use your Extra-X in daylight with its optional Daylight Loader, avoiding the use of a darkroom, freeing up space in your surgery. Velopex x-ray film processors have excellent economy and efficiency, maximising chemical longevity and reducing your operating costs.

SPECIAL \$5,999.00 D.L. \$899.00



Velopex Intra X



SPECIAL \$3,399.00

D.L. \$529.00

WATER LINE TREATMENT



MICROSURE H2O

- Detects any bacteria, fungi and biofilm
- Fast, Easy, Accurate Results in one hour or less
- Economical
- Easier Sampling with reduced chance for false positives
- 12 individual single-use disposable syringe sampling systems / box



**PROMO PRICE
\$265.95**



(MSH2Os-012) 12 pack

DENTAL WATERLINE TREATMENT

MicroSure Shock

**PROMO PRICE
\$29.49**



1 Liter Bottle, Concentrate - CHS MicroSure Shock Dental Waterline Treatment is a highly concentrated liquid for use in the treatment and cleaning of dental unit waterlines. 1:10 dilution

(MSS-01)

SUCTION

Base
VAC

Dry Suction Unit



PRICE STARTING
\$10,200

Max (HV) Users:	2x4
Operatories:	8-12
"Hg:	5" - 25"Hg"
Power (HP):	2 x 2.0
Power (AMP):	2 x 9.5
Voltage:	220 V , 1 Phase



GoldenVac Stainless Steel Liquid Ring Vacuum

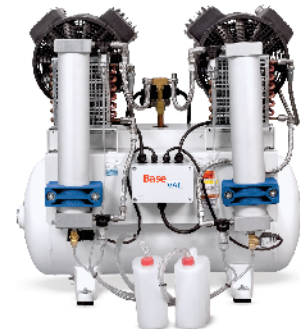
Price Starting
\$3,950



Base
VAC

Air Compressor - Oil less Dependable, Powerful & PermaDry

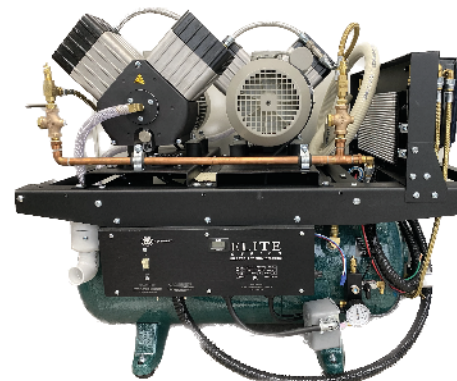
Price Starting
\$8,900



Air Compressor - Oil less

Price Starting
\$8,500

**Very Quiet
operation**



SOLMETEX NXT HG5 SERIES **Price Starting** **\$1,249**

- The NXT Hg5 is the next generation in Amalgam Separation and the gold standard.
- NXT Hg5 meet or exceed all state and federal requirements for the safe removal of mercury in the dental office.

HG5-NXT-MINI

NXT Mini Separator (1-4 operatories)

HG5-NXT-001

NXT Separator (up to 10 operatories)

HG5-NXT-HV

NXT High Volume Separator (up to 20 ops)

Price Starting \$379.50



**NXT Hg5
Collection Container**



**Hg5 [Legacy]
Collection Container**



Complete Evac System Cleaner



Power Scrub Vaccum Line Cleaner

**\$329.00/case
of 4 Bottle**
**3+@\$308.00 ea
case of 4 Bottle**



One Bottle 64 FL oz 1.89L



Ultrasonic Cleaning System 1 gal & 3 gal Capacity



1 gal. \$849.00
3 gal. \$1,849.00

- These systems are manufactured with only the highest quality components. These machines provide 60 kHz of quiet cleaning power which is less aggressive to instruments while still removing all surface contamination.

CALL FOR OUR SPECIAL PRICE

WATER DISTILLERS

SMART-STERI 200 **SPECIAL** Dental sterilization water system \$2,200

- Reduce maintenance costs
- Save valuable staff time
- 3 gallon reservoir so water is always on demand
- High quality 5 stage filtration system
- Easy to read LED display, plugs into any outlet



Water Distillers Model DS 1000

- Tuttnauer offers a distiller that provides pure water that is 99% free of total dissolved solids.
- These distillers eliminate the inconvenience and expense of buying bottled water. Their ease of operation makes them ideal for any medical, dental or laboratory application.

\$749.00
SPECIAL PRICE



ULTRASONIC CLEANERS & TABLETS



Ultrasonic Cleaning System



P4861
SPECIAL
\$940.00

Model	P4831	P4861	P4875
Tank size	3.2 Qt/3L	1.6 Gal/6L	2 Gal/7.5L
Fits Cassettes	6" x8"	6" x8", Zirc's 10 pc	8"x11"

SPECIAL \$585.00
P4831



SPECIAL \$1,098.00
P4875



ISONIC Cleaning Tablets

\$69.00



CTDE01

SABLE

NEW! ULTRASONIC 3-IN-1 PRESOAK & CLEANER

4+2*
BUY 4 GET 2

Bio-Pure Ultrasonic
Presoak & Cleaner
Item # 2801302
Net 4+2



Effectiveness

Triple action enzymes & proprietary surfactants.

Great Value

Concentrated 1 oz. makes 1.5 gal. 32 oz. bottle makes 48 gallons of solution (1:192 ratio).

Naturally Safe

Non-corrosive, Non-foaming and Non-toxic.

LAB EQUIPMENT



No. 1A Vibrator

\$ 150.00

- Buffalo Dental's most popular vibrator that is ideal for the dental laboratories.
- Durable 4" rubber-covered platform
- Improved 3-speed switch



Econo-Vac Vacuum Former

\$ 699.00

- Premium vacuum former features power and performance in a standards, upright design. Dual stage vacuum motor provides powerful suction and accurate adaptations.
- Spring loaded, self leveling, gasket-seated frame handles a variety of 5" x 5" sheet material.



Therma-Knife - Tray Trimming Knife

\$ 399.00

- Effective, time-saving knife for fast and easy trimming of bleaching trays, night guards, mouth guards and other thermoplastic materials.
- Simply choose the pen with the tip design best for your needs, set the console to the desired temperature and complete your trimming job with ease.



Wet Model Trimmers

\$ 1,199.00

- Durable, extras-heavy duty rotary trimming machines with high torque cutting power and no-frills simplicity.



Trap-Eze Disposable Plaster Traps

PRICE STARTING \$ 29.00

- The sanitary, convenient, odor-resistant solution for the capture and disposable of messy wet model trimming waste.



OUR SERVICES

1. IN-OFFICE EQUIPMENT REPAIRS

Chairs and Delivery Units
Lights
Sterilizers
X-ray Units
Ultrasonic Scalers and Cleaners
Handpieces
Compressors
Vacuum Pumps
Film Processors
And Other Small Equipment

2. HANDPIECE REPAIRS

All Makes and Models
High Speeds
Slow Speeds
Air Motors
Electric Motors
Endo Units

3. PREVENTATIVE MAINTENANCE PROGRAMS

Utility Rooms Only
Small Clinic Program
Large Clinic Program

4. X-RAYS ANNUAL HARP TESTING

Intra Oral x-rays
Panoramic x-rays
Cephalometric x-rays

5. AMALGAM SEPARATORS

Filters Replacement
Pick Up and Disposal

6. EQUIPMENT DISCONNECT AND INSTALLATIONS

New Office Installations
Renovations

7. NEW OFFICE DESIGN

Plans
X-ray Approval

8. REUPHOLSTERY

Patient Chairs
Dr. and Asst. Stools
Waiting Area Seating

9. RENTAL EQUIPMENT

Sterilizers
Ultrasonic Scalers
Ultrasonic Cleaners
Vacuum Pumps
Air Compressors

10. IN OFFICE STAFF TRAINING

Daily Maintenance Protocol
Weekly Maintenance Protocol
Monthly Maintenance Protocol

* Denmar Dental Inc. is not responsible for any typographical errors. Prices are subject to change without prior notice. All brands are holders of their respective trademarks. Some products advertised, may not carry a valid licence in Canada.



3105 Unity Drive, Unit 27,
Mississauga, ON, L5L 4L3

www.denmardental.ca
sales@denmardental.ca

Monday - Thursday: 9:00AM - 5:00PM
Friday: 9:00AM - 2:00PM
SHOWROOM
Saturday (by appointment only)